

ENCROACHMENT *guidelines*

These guidelines are intended to provide guidance on the "do's and don'ts" within or around DEMCO easements - also referred to as Right-of-Way (ROW).

USES OF ROW THAT MAY BE PERMISSIBLE*

The following list includes examples of uses that MAY be permitted within the ROW provided certain standards are observed and any necessary agreements are properly executed. Please keep in mind that every encroachment has a unique set of circumstances and is evaluated on a case-by-case basis.

- Agricultural and Farm Use
- Drainage ditches
- Driveways
- Fences with sufficient gated access
- Grading (minor)
- Parking
- Ponds (small)
- Recreational activities
- Underground utility lines

USES OF ROW GENERALLY NOT PERMITTED*

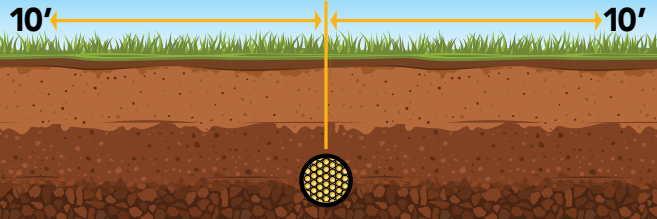
The following list includes uses that interfere with, obstruct, restrict, or endanger DEMCO's use of its ROW and are generally NOT permitted in order to preserve our rights to construct, operate, maintain, access, replace and reconstruct our facilities in a safe and timely manner.

- Antennas or Satellite Dishes
- Attachments to DEMCO structures unless specifically addressed in a Joint Use Agreement
- Burning
- Flammable material
- Fueling or fuel storage
- Garbage receptacles (dumpsters)
- Graves or mausoleums
- Hazardous substances
- Junkyards or solid waste burial
- Kite or model airplane flying
- Land fills
- Manufactured/Mobile homes/Campers/Travel Trailers
- Orchards or tree farms
- Outdoor lighting not owned or maintained by DEMCO
- Playground equipment
- Pools (in-ground or above ground)
- Retaining Walls
- Septic tanks and field lines (both above and below ground)
- Storage or deposits of soil
- Structures of any kind (including houses, sheds, barns, etc.)
- Tall signs and billboards
- Trees or shrubs which at maturity may exceed four (4) feet in height
- Water Wells

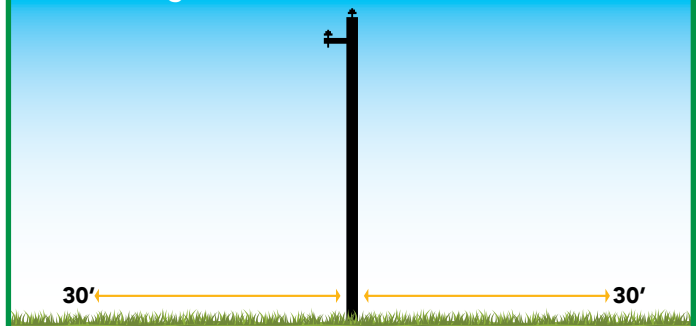
* The lists above are not intended to be exclusive. Always contact DEMCO in advance of potential encroachment at ROW@DEMCO.org.

The following are typical ROW no-plant widths for DEMCO Transmission and Distribution lines.

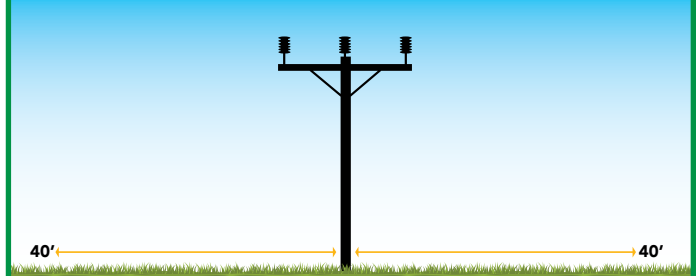
Single and Three Phase Underground Distribution



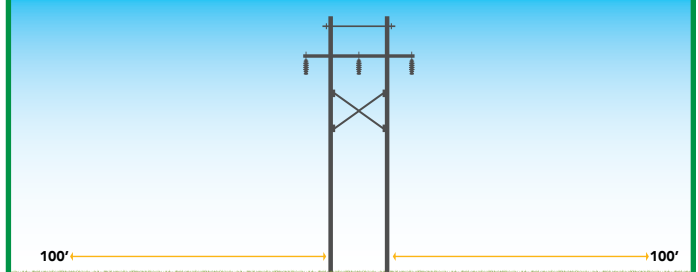
Single Phase Overhead Distribution



Three Phase Overhead Distribution



Transmission



DEMCO

A Touchstone Energy
Cooperative

 /DEMCOLouisiana